

TITAN CORP

TAIWAN



EQUIPMENT LEGS & SHELVING HARDWARE

ABOUT TITAN CORP

Titan Corp was established in 2001.

We specialize in manufacturing equipment legs and cabinet hardware. Our aim is to go beyond the basics of quality, cost, and reliability, to develop a long-term mutually profitable relationship.

Our products and services have helped businesses of all sizes to grow. Whether just starting out or looking to lean down manufacturing processes.

Titan Corp provides the ultimate quality, competitive pricing, and on time delivery schedule. We are capable to be your reliable supply partner or act as a remote expansion of your business.

**“Our goal is not just to live up to expectations;
it is at all times to exceed them!”**

PRODUCTS & SERVICES



EQUIPMENT LEGS 8

- Stainless Steel Adjustable Feet
- Stainless Steel Adjustable Legs
- Zinc Die-Cast Chrome Plated Adjustable Feet
- Plastic Adjustable Feet
- Plastic Leg Inserts
- Plastic Tube Closures



SHELVING HARDWARE 16

- Stainless Steel Drawer Pulls
- Zinc Die-Cast Chrome Plated Utility Locks
- Stainless Steel Hinges



MANUFACTURING SERVICE 19

- OEM / ODM



Stainless Steel Adjustable Feet

Allows height adjustments for the variation in surface levels. Constructed with high quality of stainless steel 304 to offer extra resistant against harsh environment.

Fully TIG welded, free of spatter. The stems have open face for minimum effort of adjustment by wrench. The arrangement of mounting holes, stem height, thread, and adjustment length can all be customized upon customers demand. Glides can be added to all models.



Stainless Steel Adjustable Leg

Constructed with high quality of stainless steel 304. The exterior can be fully polished, hairline finish, or satin to maximize aesthetic appearance as well as removing any weld marks.

The foot is nylon adjustable with either stainless steel or mild steel zinc plated mounting plates. Can also be matched with our Stainless Steel Clad Adjustable Feet for a complete stainless steel unit. Leg diameter and height can be custom made.



Zinc Die-Cast Adjustable Feet

Allows height adjustments for the variation in surface levels. Constructed with high quality of die cast zinc alloy to offer extra resistant against harsh environment. Exterior finish can either be chrome plated or natural finish.

Cladded feet are made with the same die-cast zinc alloy core with high quality stainless steel 304 clad onto the exterior. Offers extra load capacity, resistance against corrosion, as well as enhanced aesthetic values.

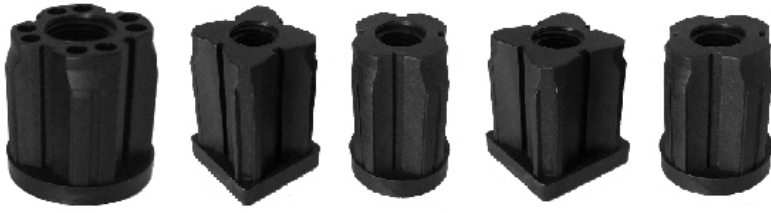
Fit wall thickness of tubing from 1.2 ~ 1.6mm.



Plastic Adjustable Feet

Simple, long lasting, and economical solution for stabilizing shelves or tables on uneven floor. Made with high quality nylon (nylon 6 & nylon 66) with added fiberglass for better durability.

Fit wall thickness of tubing from 1.2 ~ 1.6mm.



Plastic Leg Inserts

Allows easy installation of adjustable feet or equivalent products.

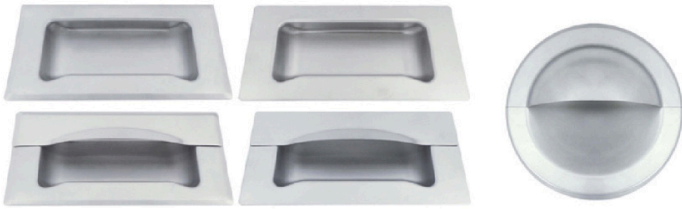
These are made with high quality nylon (nylon 6 & nylon 66) with added fiberglass for better durability. Heavy duty available.

Fit wall thickness of tubing from 1.2 ~ 1.6mm.



Plastic Tube Closures

Constructed from high quality polypropylene (PP) with ribbed fins to ensure a tight fit inside tubing for a variety of wall thickness.



Stainless Steel Drawer Pulls

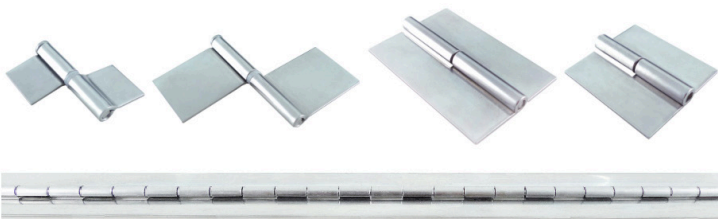
Mounts flush with the mounting surface. Installation either by fixing studs with nuts or welding. Constructed with full stainless steel 304 with polished facade.

Pull handles can be attached for a larger grip. Stainless steel fixing studs are spot welded and stainless steel locking nuts are included.



Zinc Die-Cast Chrome Plated Locks

Constructed with high quality zinc die-cast chrome plated to offer extra resistance and durability against corrosion. Two brass keys and securing hex nuts are included. Keys are removable in either locked or unlocked position.



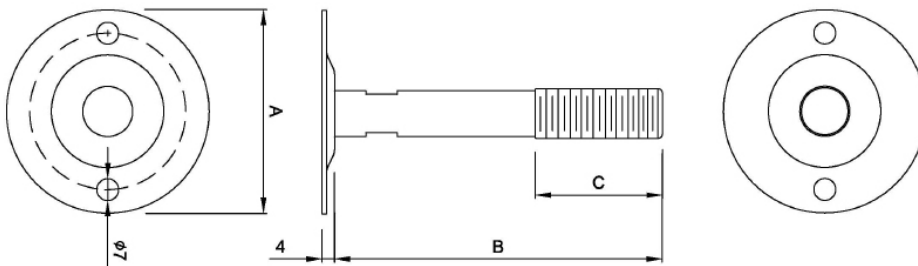
Stainless Steel Hinges

Eliminates the mortising on doors or jambs. Constructed with stainless steel 304 to prevent corrosion and suitable for outdoor usage. Nylon bearings included.

Left-hand or right hand applications.

Stainless Steel Adjustable Feet

Disc Foot

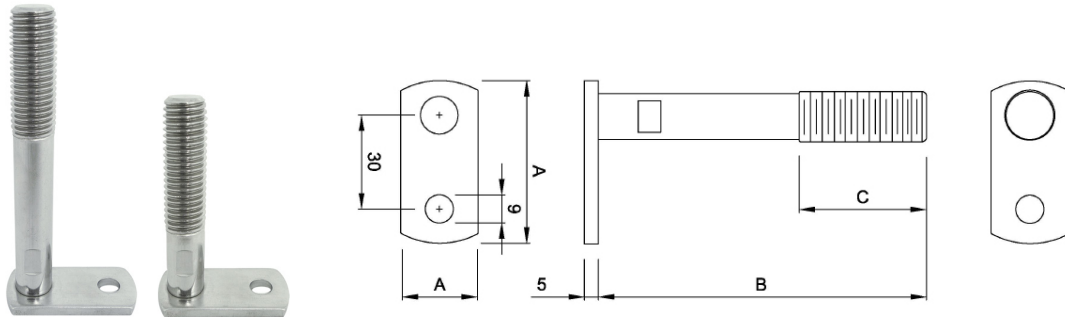


	RD 54338	RD 54358	RD 54538
Disc Diameter (A)	38mm	38mm	50mm
Stem Height (B)	70mm	105mm	70mm
Max. Adj. (C)	~50mm	~50mm	~50mm
Thread	M12/M16	M12/M16	M12/M16

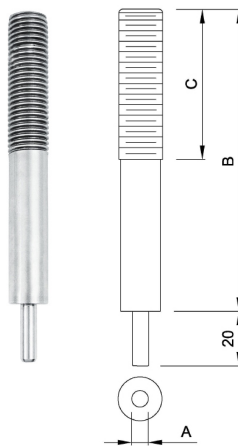
	RD 54558	RD 54738	RD 54758
Disc Diameter (A)	50mm	65mm	65mm
Stem Height (B)	105mm	70mm	105mm
Max. Adj. (C)	~50mm	~50mm	~50mm
Thread	M12/M16	M12/M16	M12/M16

Stainless Steel Adjustable Feet

Lug Foot / Pin Foot



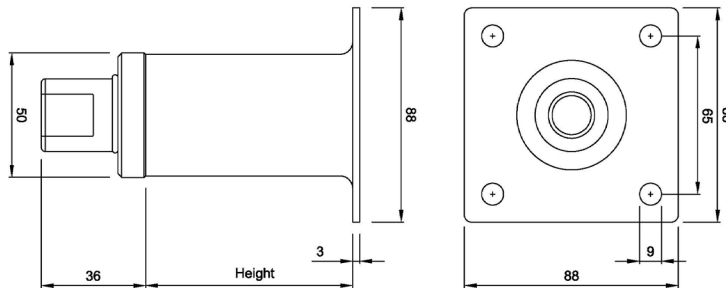
	RD 54438	RD 54458
Lug Size (A)	52 x 25mm	52 x 25mm
Stem Height (B)	70mm	105mm
Max. Adj. (C)	~50mm	~50mm
Thread	M12/M16	M12/M16



	RD 54637	RD 544867
Stem Diameter (A)	5mm	6mm
Stem Height (B)	70mm	110mm
Max. Adj. (C)	~50mm	~50mm
Thread	M12	M16

Stainless Steel Adjustable Leg

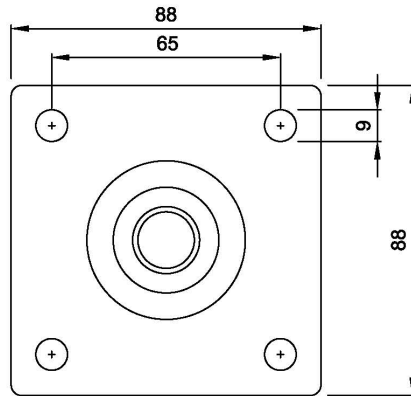
Stainless Steel Adjustable Leg & Stainless Steel Mounting Plate



	RD 64716	RD 64726	RD 64756	RD 64776
Leg Diameter	50mm	50mm	50mm	50mm
Leg Height	85mm	110mm	160mm	210mm
Mounting Plate	Stainless Steel	Stainless Steel	Stainless Steel	Stainless Steel
Adjustment	30 ~ 50mm	30 ~ 50mm	30 ~ 50mm	30 ~ 50mm
	RD 64816	RD 64826	RD 64856	RD 64876
Leg Diameter	50mm	50mm	50mm	50mm
Leg Height	85mm	110mm	160mm	210mm
Mounting Plate	Mild Steel Zinc Plated	Mild Steel Zinc Plated	Mild Steel Zinc Plated	Mild Steel Zinc Plated
Adjustment	30 ~ 50mm	30 ~ 50mm	30 ~ 50mm	30 ~ 50mm

Mounting Plate

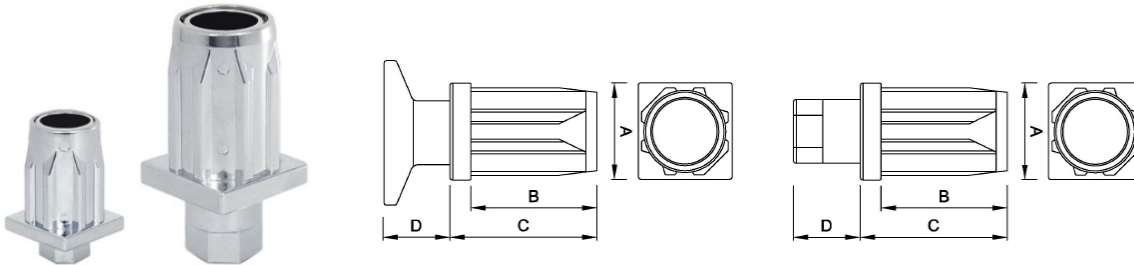
Stainless Steel / Mild Steel



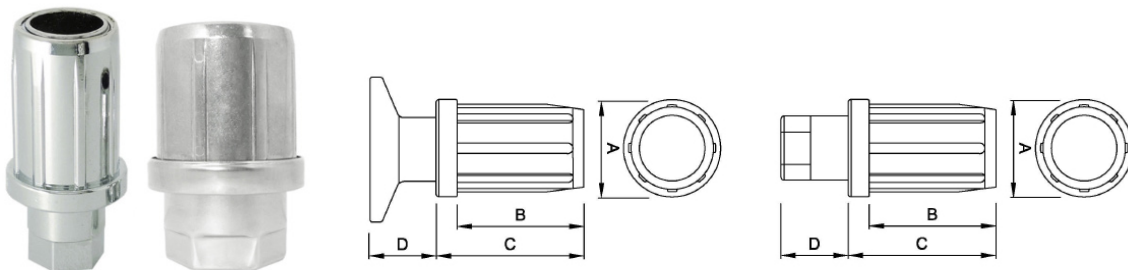
	RD 94334	RD 94444
Thickness	3mm	4mm
Thread	5/8" - 10	5/8" - 10
Mounting Plate	Stainless Steel	Mild Steel Zinc Plated

Zinc Die-Cast Adjustable Feet

Square / Round



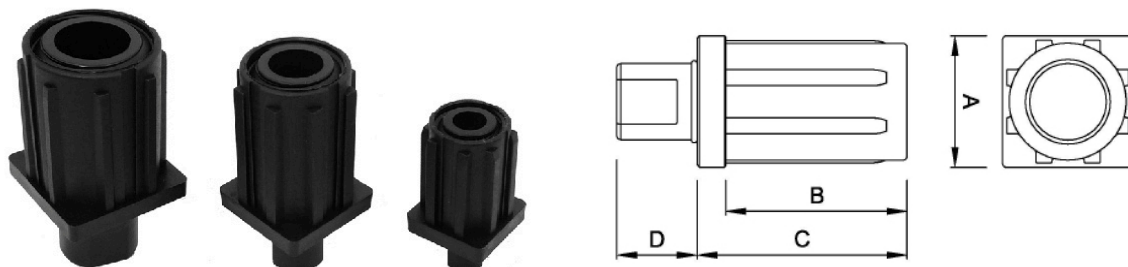
	RD 36413 RD 36463 RD 36423	RD 36414 RD 36464 RD 36424	RD 36415 RD36465 RD 36425	RD 36416 RD 36466 RD 36426
Application (A)	25mm SQUARE	32mm SQUARE	38mm SQUARE	50mm SQUARE
Max. Adj. (B)	32mm	43mm	43mm	46mm
Body Height (C)	37mm	50mm	50mm	55mm
Foot Height (D)	10mm	23mm	23mm	27mm
Foot Style	HEX	HEX	HEX	HEX
	FLANGE CLAD	FLANGE CLAD	FLANGE CLAD	FLANGE CLAD



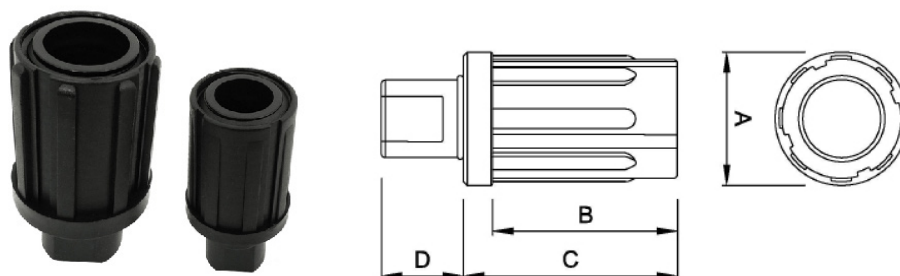
	RD 36413 RD 36463 RD 36423	RD 36414 RD 36464 RD 36424	RD 36415 RD36465 RD 36425	RD 36416 RD 36466 RD 36426
Application (A)	25mm ROUND	32mm ROUND	38mm ROUND	50mm ROUND
Max. Adj. (B)	32mm	43mm	43mm	46mm
Body Height (C)	37mm	50mm	50mm	55mm
Foot Height (D)	10mm	23mm	23mm	27mm
Foot Style	HEX	HEX	HEX	HEX
	FLANGE CLAD	FLANGE CLAD	FLANGE CLAD	FLANGE CLAD

Plastic Adjustable Feet

Square / Round



	RD 29432	RD 29433	RD 29434	RD 29435	RD 29436
Application (A)	19mm SQUARE	25mm SQUARE	32mm SQUARE	38mm SQUARE	50mm SQUARE
Max. Adj. (B)	12mm	20mm	20mm	20mm	30mm
Body Height (C)	31mm	40mm	52mm	52mm	65mm
Foot Height (D)	11mm	14mm	20mm	25mm	26mm
Foot Style	HEX	HEX	HEX	HEX	HEX

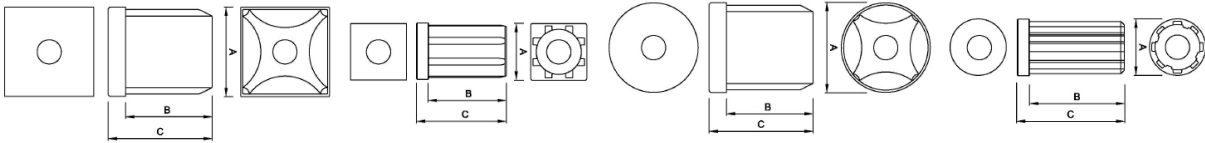


	RD 29332	RD 29333	RD 29334
Application (A)	19mm ROUND	25mm ROUND	32mm ROUND
Max. Adj. (B)	12mm	20mm	20mm
Body Height (C)	31mm	40mm	52mm
Foot Height (D)	11mm	14mm	20mm
Foot Style	HEX	HEX	HEX

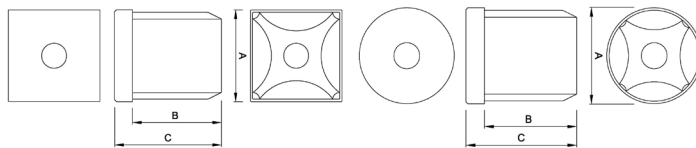
	RD 29334	RD 29335	RD 29336	RD 29336
Application (A)	32mm ROUND	38mm ROUND	50mm ROUND	50mm ROUND EXT
Max. Adj. (B)	20mm	20mm	30mm	50mm
Body Height (C)	52mm	52mm	65mm	85mm
Foot Height (D)	20mm	25mm	26mm	26mm
Foot Style	HEX	HEX	HEX	HEX

Plastic Leg Inserts

Standard / Heavy Duty



	RD 49443	RD 49444	RD 49445	RD 49446
Application (A)	25mm SQUARE	32mm SQUARE	38mm SQUARE	50mm SQUARE
Max. Adj. (B)	40mm	55mm	50mm	50mm SQUARE
Body Height (C)	46mm	62mm	60mm	60mm
Thread	M12/M16	M12/M16	M12/M16	M12/M16
	RD 49343	RD 49344	RD 49345	RD 49346
Application (A)	25mm ROUND	32mm ROUND	38mm ROUND	50mm ROUND
Max. Adj. (B)	40mm	55mm	50mm	50mm ROUND
Body Height (C)	46mm	62mm	60mm	60mm
Thread	M12/M16	M12/M16	M12/M16	M12/M16



	RD 49645	RD 49646
Application (A)	38mm SQUARE	50mm SQUARE
Max. Adj. (B)	50mm	50mm SQUARE
Body Height (C)	60mm	60mm
Thread	M12/M16	M12/M16
	RD 49545	RD 49546
Application (A)	38mm ROUND	50mm ROUND
Max. Adj. (B)	50mm	50mm ROUND
Body Height (C)	60mm	60mm
Thread	M12/M16	M12/M16

Plastic Tube Closures

Square / Round



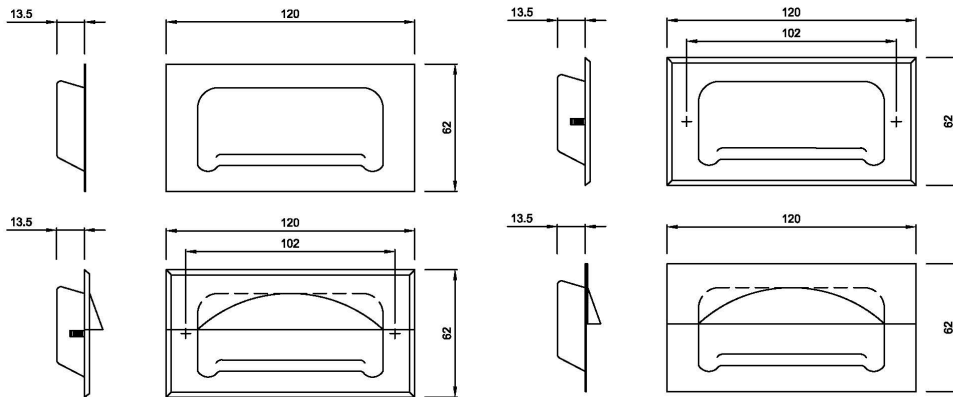
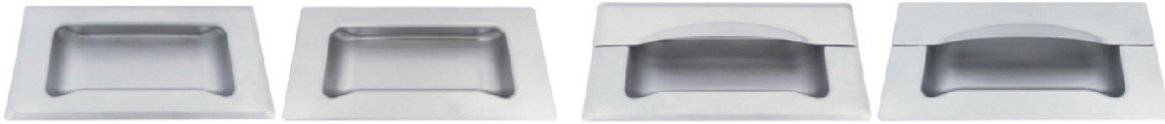
	RD 89422	RD 89423	RD 89424	RD 89425	RD 899426
Application (A)	19mm SQUARE	25mm SQUARE	32mm SQUARE	38mm SQUARE	50mm SQUARE
Insert Height (B)	13mm	13mm	13mm	13mm	13mm
Body Height (C)	16.5mm	16.5mm	16.5mm	16.5mm	16.5mm



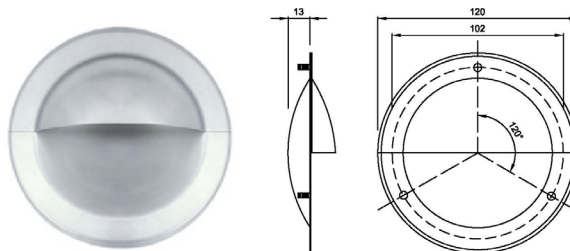
	RD 89322	RD 89323	RD 89324	RD 89352	RD 89326
Application (A)	19mm ROUND	25mm ROUND	32mm ROUND	38mm ROUND	50mm ROUND
Insert Height (B)	13mm	13mm	13mm	13mm	13mm
Body Height (C)	16.5mm	16.5mm	16.5mm	16.5mm	16.5mm

Stainless Steel Drawer Pulls

Rectangle / Round

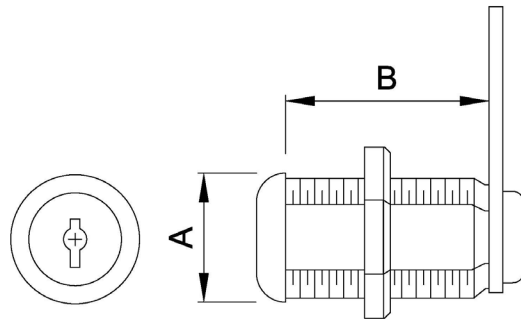


	RE 24432	RE 24422	RE 24523	RE 24533
Dimension	120 X 62mm	120 X 62mm	120 X 62mm	120 X 62mm
Edge	BEVEL	BEVEL	FLUSH	FLUSH
Pull Cover	NO	YES	YES	NO
Fixing Stud	YES	YES	NO	NO



	RE 24222
Dimension	120 X 120mm
Edge	BEVEL
Pull Cover	YES
Fixing Stud	YES

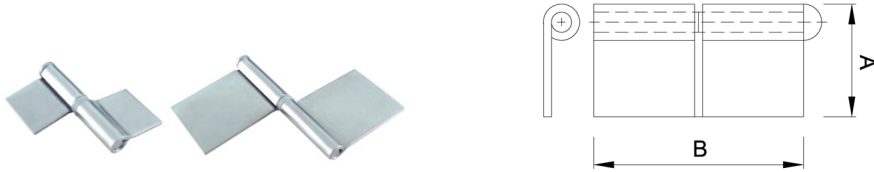
Zinc Die-Cast Chrome Plated Utility Locks



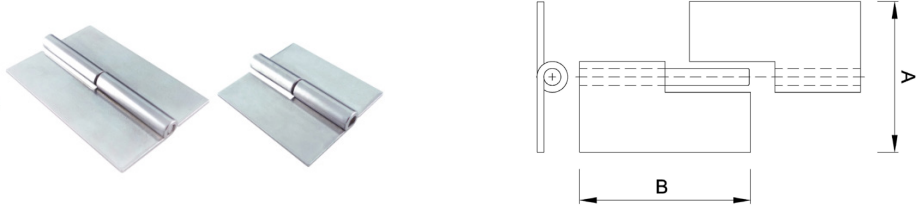
	RH 44623	RH 44625	RH 44627
Barrel Dia. (A)	22mm	22mm	22mm
Barrel Length (B)	22mm	28mm	35mm
Thread	7/8" x 3/4" - 27	7/8" x 3/4" - 27	7/8" x 3/4" - 27

Stainless Steel Hinges

Flag Hinge / Lift-Off Hinge / Continuous Hinge



	RS 35137	RS 35135-L	RS 35136-R
Width (A)	28mm	50mm	50mm
Length (B)	52mm	75mm	75mm
Pin Diameter	Ø 4.8mm	Ø 4.8mm	Ø 4.8mm
Thickness	2mm	2mm	2mm



	RS 35221-L	RS 35222-R	RS 35223-L	RS 35224-R
Width (A)	44mm	44mm	50mm	50mm
Length (B)	50mm	50mm	76mm	76mm
Pin Diameter	Ø 4mm	Ø 4mm	Ø 4mm	Ø 4mm
Thickness	2mm	2mm	2mm	2mm



	RC 74221	RC 74331	RC 74341	RC 74351
Width (A)	27mm	32mm	38mm	50mm
Length (B)	1800mm	1800mm	1800mm	1800mm
Pin Diameter	Ø 2.5mm	Ø 3.2mm	Ø 3.2mm	Ø 3.2mm
Thickness	0.9mm	1.2mm	1.2mm	1.2mm

	RC 74461	RC 74471	RC 74483	RC 74492
Width (A)	57mm	63mm	76mm	127mm
Length (B)	1800mm	1800mm	2160mm	2000mm
Pin Diameter	Ø 4.5mm	Ø 4.5mm	Ø 4.5mm	Ø 4.5mm
Thickness	1.6mm	1.6mm	1.6mm	1.6mm

Manufacturing Service

We possess the engineering knowledge and backgrounds to be capable of developing and manufacturing new products to fit your requirements and conditions.

Please contact us for more options and possibilities to enhance your business opportunities.

We aim to exceed your expectations.

* Customization upon request, minimum order may be required for specific products.



**For any inquiries or questions regarding our products,
please contact us, our sales representative will be glad to assist.**

TITAN CORP

TAIWAN

Email: sales@titancorp.com.tw